



## Need more info?

To delve deeper into your plans and discuss how we can best support you, book your **FREE Discovery Call** today. During the call we can provide further insights into our services, timeframes, and what to expect when choosing us as your sustainable builder.



01260 545348



*Riverside Offices,  
Congleton, CW12 1dy*



*sales@thetinyhousing.co*

Contact us for pricing

# Starling

## Stand out with purpose

New model for 2024\*

For those seeking the wow factor, the Starling 2-bedroom model is the epitome of style, designed to cater to even the most discerning customers.

[www.thetinyhousing.co](http://www.thetinyhousing.co)

Contemporary White 2 bed



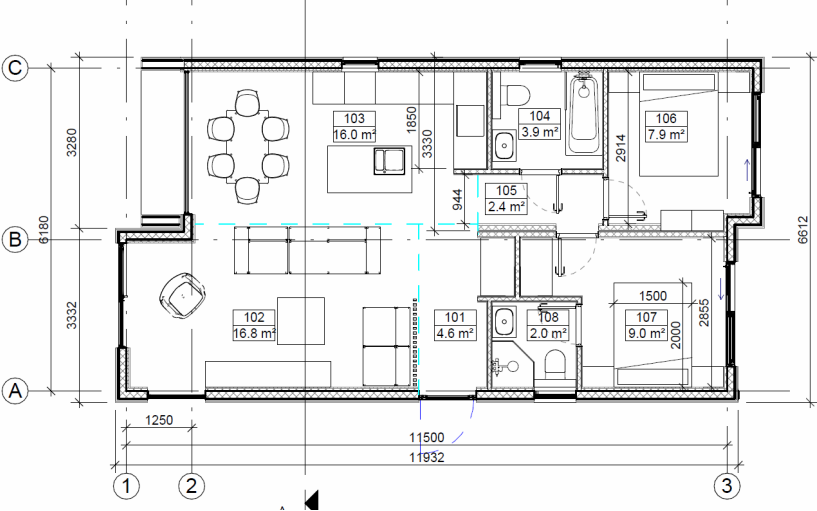


# Built for you.

- Contemporary or Lux design options
- Smart lighting, coffee/wine stations available
- Energy efficient living
- High quality materials for healthier homes
- 60 year lifespan for a home to be proud of

## Step inside

Starling 2 bedroom model



### Starling 2 bed

Two full size bedrooms with ample living for all.

### Starling 2 bed XL

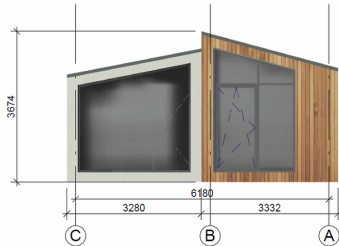
A family home with extra space for luxury living.



**40ft x 20ft**

**44ft x 22ft**

ELEVATION C-A  
M 1 : 100



ELEVATION A-C  
M 1 : 100

