



Premium Crafted Lodges

2024 Edition



Web: www.thetinyhousing.co
Email: sales@thetinyhousing.co

Step into the future

Welcome to a new chapter in hospitality excellence with THC Lodges, where your pursuit of high-quality, sustainable accommodation aligns perfectly with our ethos.

At THC, we don't just offer lodging; we collaboratively craft environments that elevate guest experiences while prioritising health and environmental stewardship, ensuring that each of our properties is not only a retreat for its guests but also a standard-bearer for eco-responsibility in the hospitality industry.

Why choose THC for your lodge site? The answer is clear. If your objective is to integrate luxury accommodations with eco-conscious operations, then THC is your ideal partner. Our properties are designed to endure, reflecting both timeless durability and aesthetic appeal. This resilience underscores our commitment to excellence and sustainability. Each location is designed to be a sanctuary, promoting a healthier environment that minimises ecological footprints and enhances guest well-being.

Beyond construction – We engage in partnership. Our relationship with our clients extends far beyond the completion of a project. We offer tailored consulting for holiday parks, ranging from those acquiring new sites to those seeking to retrofit existing properties with sustainable solutions. Throughout your partnership with us, you'll receive unparalleled support and aftercare, including comprehensive warranties, affirming our confidence in our accommodations and our dedication to client satisfaction. Our team is committed to assisting you at every stage, from initial inquiry through to the continued success of your property.

Welcome to THC, where your next step with our lodges marks a leap towards a sustainable future in hospitality.



Experience Greener Living

Embrace the future of eco-friendly opulence with our pioneering lodges.



Revenue Generation

Increase occupancy to 80% with our all-year-round lodges being warm and comfortable in even the coldest of winters.

Guest Experience

Eco-Luxury caters to upscale customers who value environmental consciousness and are in search of a luxurious yet environmentally-friendly getaway in the UK.

Modern Design

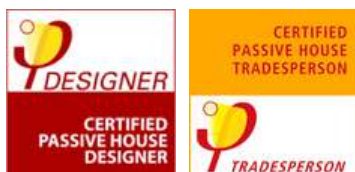
Our modern designs give your site the edge, standing out from other classic lodge sites and attracting high-end guests.

Operational Efficiency

Avoid retrofits with old gas systems in the near future with our all-electric solar-powered models. Thanks to Passivhaus construction methods, you can reduce your energy bills by up to 80%!

Greener Technology

Be ahead of the crowd with greener technology such as air source heat pumps, EV charging systems, MVHR systems, triple glazing, and aerated shower heads.



Maximised on Value, Minimise Your Footprint

A compelling study by the Sustainable Tourism Alliance revealed an undeniable trend:

78% of UK adults are steering their desires towards sustainable travel.

More poignantly, **62% of those conscious travellers are not just willing, but eager, to invest more in holiday stays** that proudly wear their sustainable credentials on their sleeves.

Reduce Energy Price Fears With Eco Homes

It's common knowledge that the average energy costs to run a traditional lodge is around £5000 per year.

Thanks to THC's high performing lodges, you'll be able to reduce your energy bills to 1/5 of the cost by simply choosing one our models

The result? More money in the pocket of the owner





Premium Lodges

High performing lodges for energy efficiency and luxury living.

2024-2025



THC Lodges Specification

EXTERIOR SPECIFICATIONS

- Insulated Timber Frame
- Energy Rating = 19 kwh/m2/year
- Wall U-Values = 0.13
- Floor U-Values = 0.12
- Ceiling U-Values = 0.12
- Sugi Ban Charred Cladding (1-6 levels)
- Anthracite Standing Seam Metal Roof
- Anthracite PVC triple-glazing (0.8
- Kitchen Rooflight (on some models)
- Bespoke Chassis (NCC Approved)

GREEN TECHNOLOGIES

- Sunamp Water Heater
- Nordis Air Source Heat Pump
- Heat Recovery System (MVHR)
- Hansgrohe Aerated Showerheads & Taps
- Shower Heat Recovery System (Eco Deluxe)
- Optional Solar PV Package (Eco Deluxe)
- Optional EV Charging System



INTERIOR SPECIFICATIONS

Bedrooms:

- Baltic Birch (Class 1) Plywood Walls
- Bespoke Bed Frame
- Bespoke Storage (2 configuration options)
- A5 Grade Laminate Flooring (oak/light oak)
- 3 x Clothes Hooks
- Bespoke Floating Side Tables (colour options)
- Hanging Wall Lights / LED Spotlights
- Decorative Wall Boarding
- Panoramic Window or Double Door

Kitchen:

- Bespoke Kitchen (3 configurations)
- Under cupboard LED Mood Lighting
- Oak Worktop (high-quality laminate/composite available)
- Compact Fridge
- Electric 2/4 Ring Hob
- Matt Black Hansgrohe Sink & Tap

Bathroom/Ensuite:

- Black Shower Tray & Enclosure (or bath)
- Matt Black Hansgrohe Sink & Tap
- Matt Black Hansgrohe Showerhead & Taps
- Backlit Mirror
- Vanity (range of colours)
- VOX Eco Stone Bathroom Panels (Range of colour Options)
- Towel Heater

Living Room:

- Acoustic Panelling
- Baltic Birch (B/BB grade) Plywood walls
- Floating Shelving
- Feature Lights / Rustic Pendant Lighting

Introducing The Skylark Lodge Range

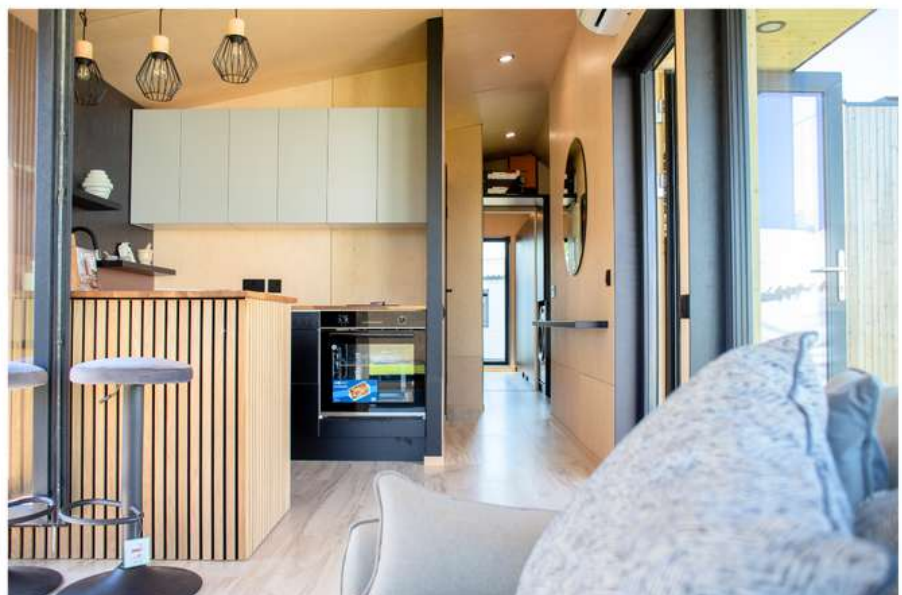
Skylar Slimline 1 bed: 9.5m x 3.6m (31ft x 12ft)

Skylark 1 bed: 9.1m x 4m (29ft x 13ft)

Skylark 1 bed XL : 12m x 4m (40ft x 13ft)

Skylark 2 bed XL : 12m x 4m (40ft x 13ft)

EXTERIOR



Elegance Meets the Outdoors

Allow the Skylark Lodge to welcome you into its embrace, where nature's grace becomes a daily companion.

Through the panoramic windows, behold the seamless blend of indoor comfort and the tranquil outdoors, making every dawn and dusk a heartfelt rendezvous with nature.

The kitchen is more than just a functional space; it's a humble ode to rustic charm. Feel the warm authenticity of real oak wood worktops beneath your fingers, set against the earthy tone of deep black base cupboards.

The overhead light grey cupboards, while practical, effortlessly complement the natural palette, weaving a serene, homely ambience.



The bedrooms feature plywood wall interiors, wood-effect flooring, and floating beds equipped with smart lighting for a comfortable and modern sleeping experience.

Additionally, the solar-powered system and Sunamp water heater are seamlessly integrated into the walkway, which also includes shoe nooks for added convenience.

The Skylark presents a serene and tranquil space to unwind, complete with acoustic boarding in the living room, natural, high-performing birch plywood walls, and relaxing ambient lighting.

The bathroom is designed with elegant stone grey finishes, a water-efficient aerated showerhead, and a soft-glow LED mirror. The sleek built-in toilet adds to the contemporary feel of the space.



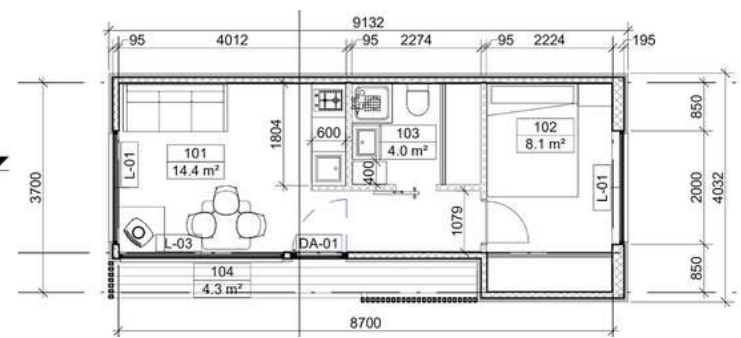
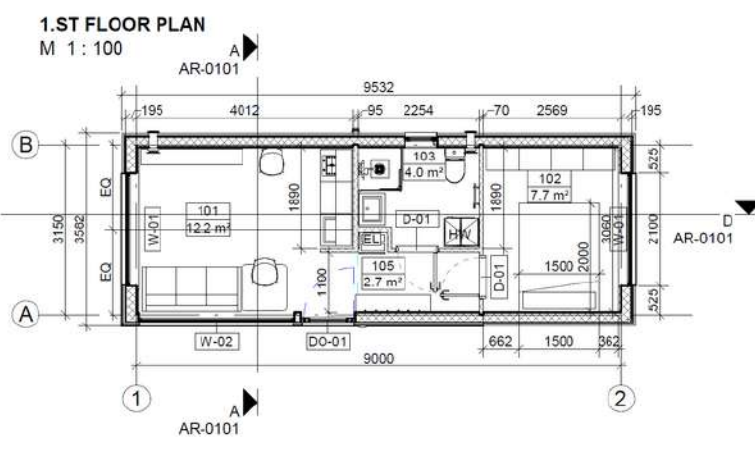
Versatility in Design

Catering to all, the Skylark range spans four sizes, ensuring that whether you're a couple seeking a romantic retreat or a family yearning for a spacious haven, there's a perfect fit awaiting you.

Skylark Slimline 1 bed
9.5m x 3.6m (31ft x 12ft)

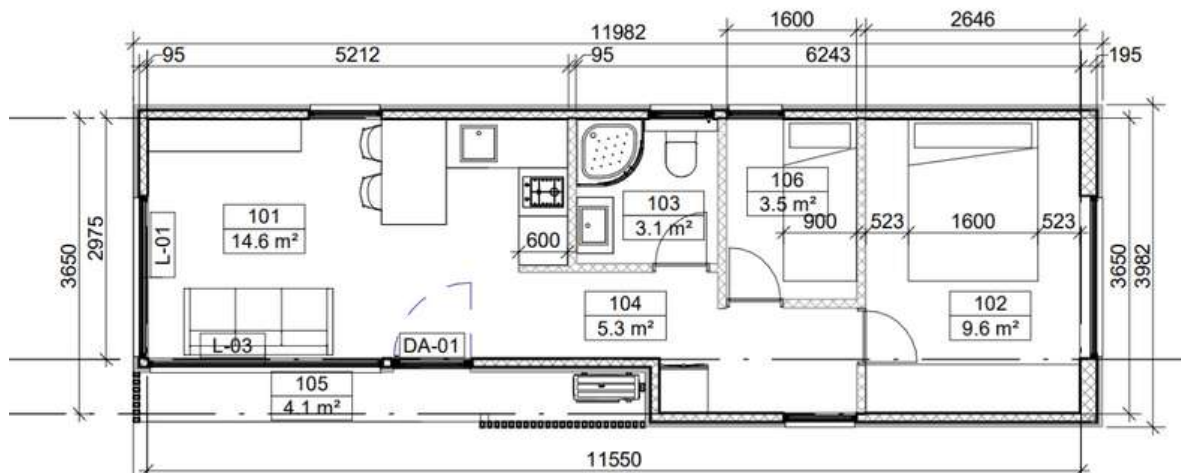
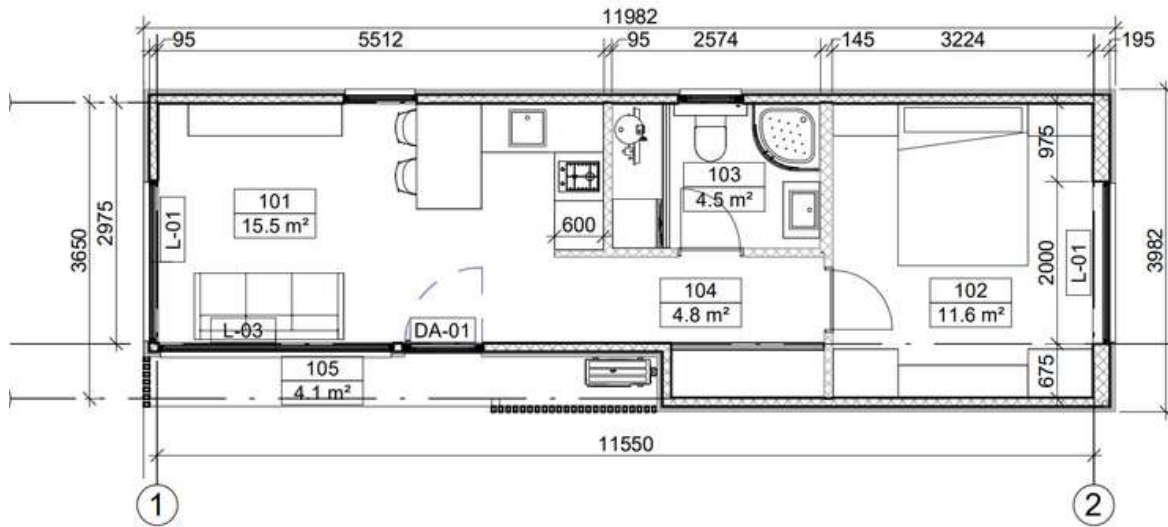


Skylark 1 bed
9.1m x 4m (29ft x 13ft)





The XL Range



Introducing The Grouse 1-2 Bed Lodge

1 bed - 12m x 3.15m / 39 x 10.3 ft (large bedroom)
2 bed - 12m x 3.15m / 39 x 10.3 ft (with bunkbeds)

Nature's Best

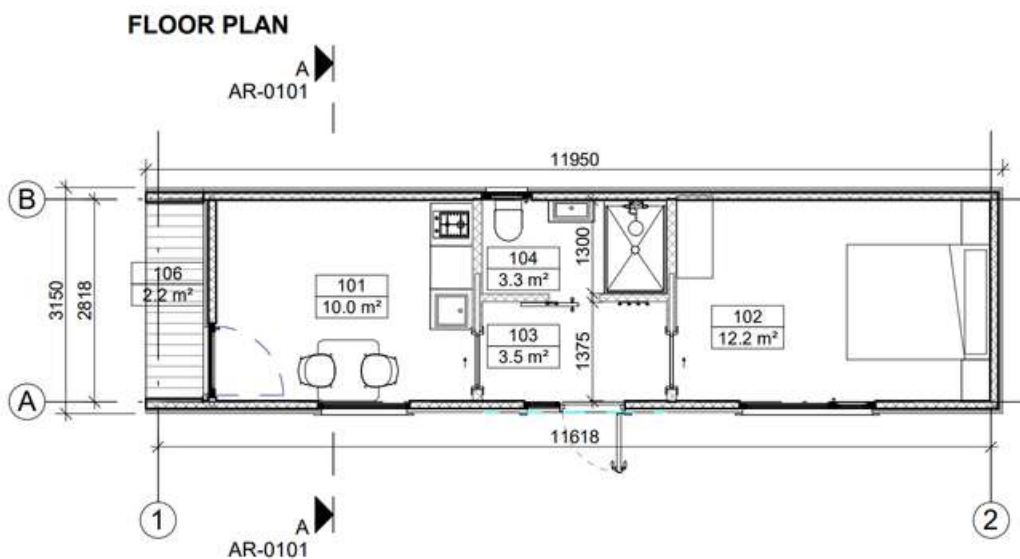
Immerse yourself in the Grouse Lodge, where every space invites a sense of escape. Step through the double doors to be greeted by a compact yet efficiently designed kitchenette, complete with a sink, two-ring hob, and fridge. Adjacent, the dining area beckons with double doors, framing nature's beauty as the perfect backdrop to your meals.





Venture further to discover a luxurious bathroom; stone grey finishes lend an air of spa-like tranquillity, while the LED mirror and opulent vanity sink elevate your experience. The master bedroom is a haven of natural light, with double doors ushering you onto a serene patio. Acoustic boarding and ambient mood lighting, coupled with a chic floating wooden bed platform, ensure nights here feel like a luxurious hotel stay.

1 BED GROUSE 39 X 10 FT / 12M X 3M

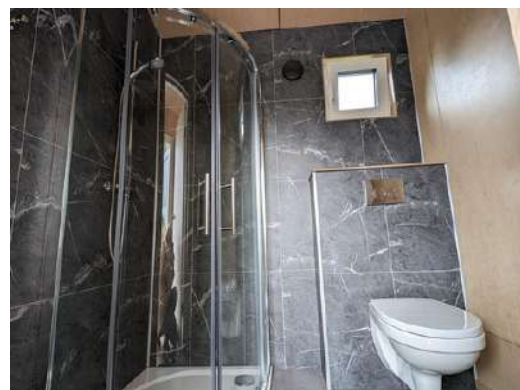
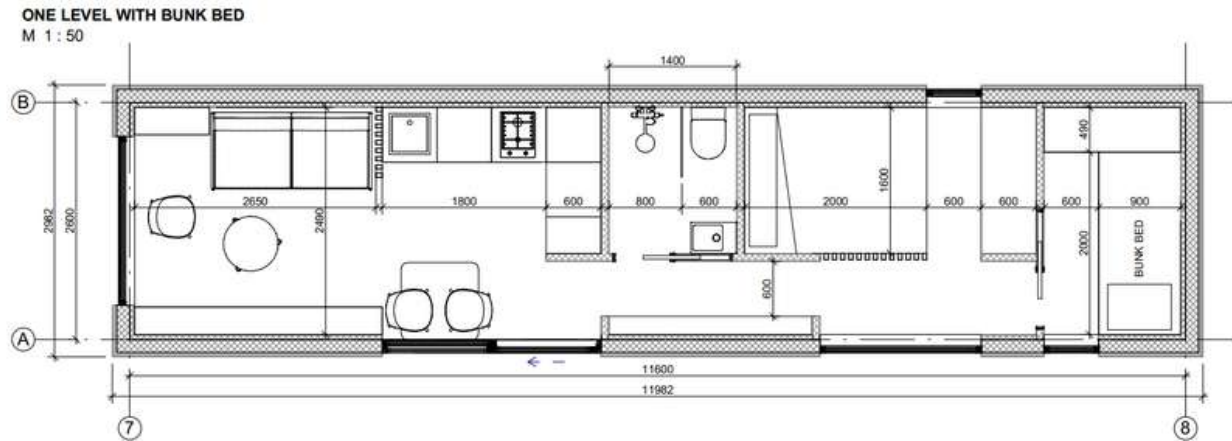


Crafted with modernity and comfort, the Grouse Lodge's slim and elongated design is ideal for compact sites and small pitch plots.

Whether you're seeking a private escape in the 1-bedroom variant or a unique family adventure in the 2-bedroom model – with the added spaciousness of a sofa bed in the living area – this lodge promises memories that linger.

2 BED GROUSE: 12M X 3M / 39FT X 10FT

The Grouse Lodge, like all of our lodges, exceed BS:3632:2023 residential specification standards, with features such as triple glazing, high levels of insulation, and impressive energy efficiency ratings that ensure a comfortable and eco-friendly stay.



Introducing The Jay 2/3/4 Bed Lodge Range

2/3 bed size: 40 x 20 ft / 12m x 6.3m

2/3 bed XL size: 44 x 22 ft version (13.5m x 6.7m)

4 bed size: 44 x 22 ft version (13.5m x 6.7m)

PITCHED ROOF VERSION



FLAT ROOF VERSION



Spacious Elegance

Meet the Jay, our most majestic model, conceived to envelop families in both vastness and warmth, perfect for serene park homes and lively family retreats. Select from a timeless pitched roof or a chic, minimalist flat roof, each promising its own allure.

In the two-bedroom rendition, imagine stepping out onto a veranda, feeling the morning's first rays or evening's gentle embrace. This version flows effortlessly into a large open-plan space, where you can relax in the lounge or dine with guests in the stunning kitchen. Opt for the three-bedroom model and be welcomed by a canvas of large triple-glazed windows and doors, allowing the natural light to flood the inside, as each room echoes the whispers of nature.



Every footstep on the luxurious wood-effect floors feels like a dance; the authentic oak worktops and sumptuous grey cupboards, kissed by soft underlighting, add touches of grandeur.

As double doors swing open, they invite a cascade of nature's splendour, letting the outside serenade the inside. The bedrooms, epitomizing innovative design and tranquillity, come alive with floating bases, acoustic boarding, and mood lighting, each night a promise of deep, dream-filled slumber.

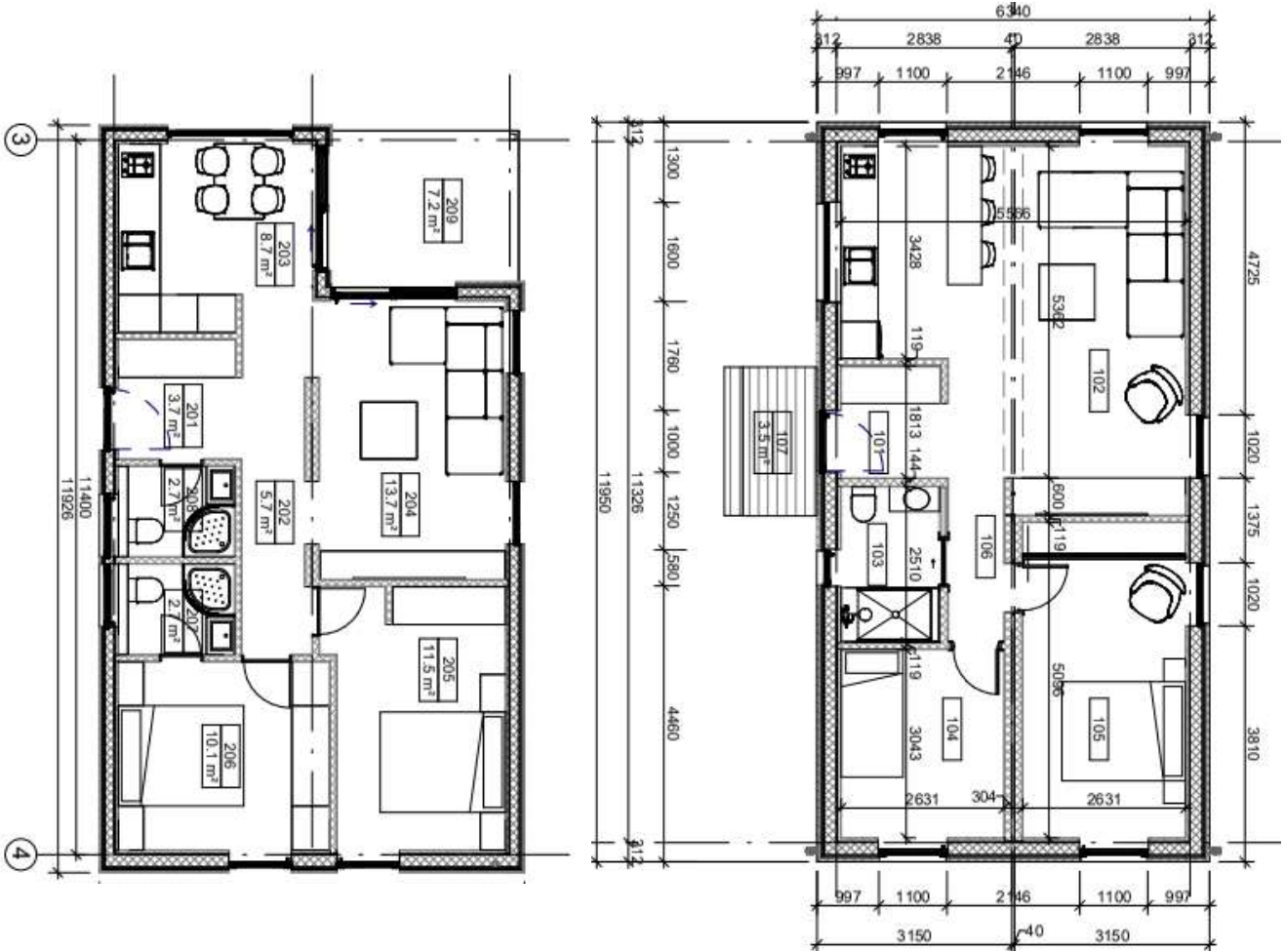
The master ensuite, with its spa-like ambience, evokes sensations of indulgence, the stone-grey walls and elegant fixtures crafting a personal oasis.

For those envisioning grand celebrations, our 2024 special four-bedroom edition beckons, designed for moments when more is truly merrier. Dive deep into the Jay's embrace – where luxury isn't just seen, but deeply felt.

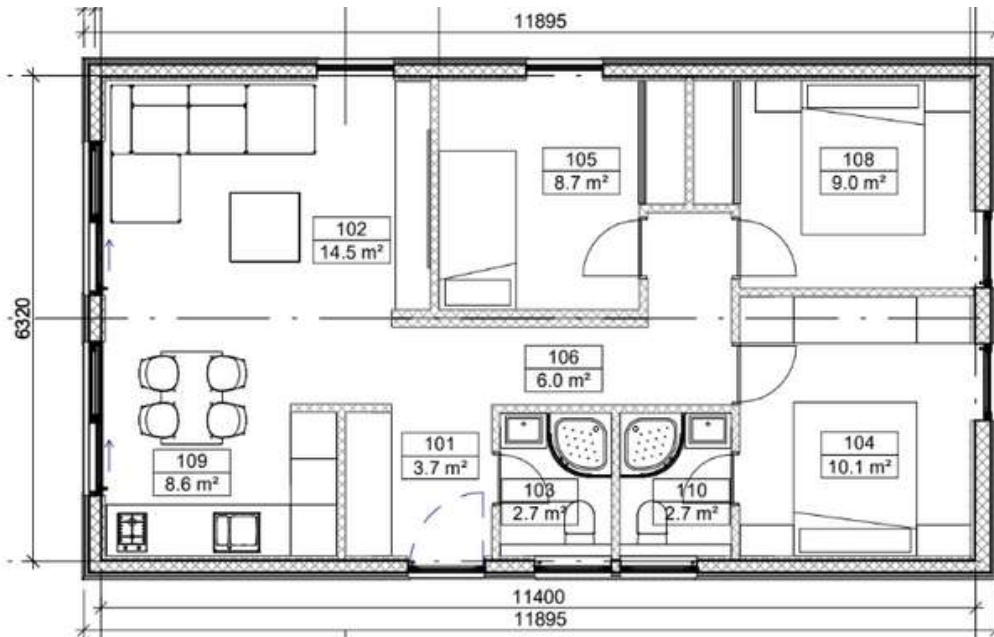
Whichever size you select, you'll be able to choose from a range of configurations and design options to make your lodge, truly, authentically you.

Spacious Elegance

Jay 2 bedroom with/without veranda
40 x 20 ft / 12m x 6.3m



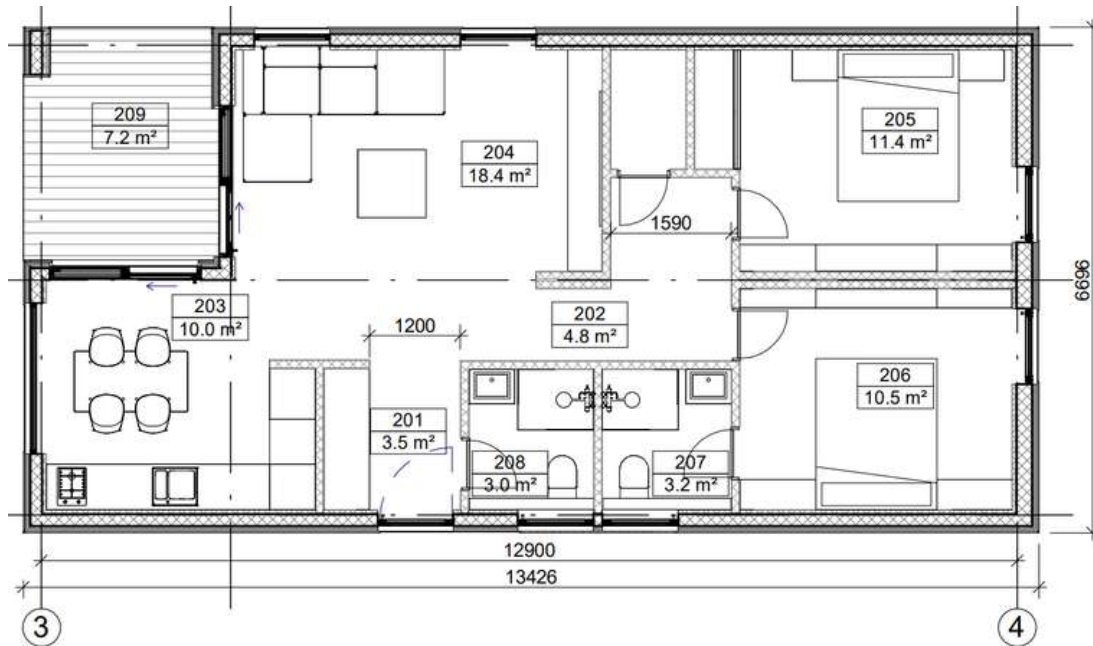
Jay 3 bedroom
40 x 20 ft / 12m x 6.3m



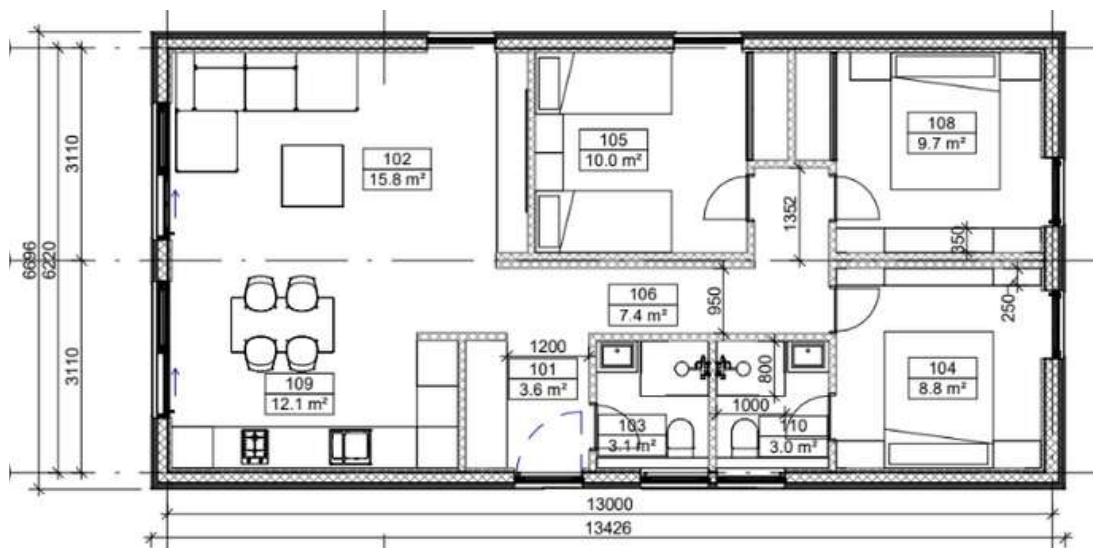
Jay XL Living Floorplan



Jay 2 bedroom with/without veranda 44 x 22 ft / 13.5m x 6.7m



Jay 3 bed 44 x 22 ft / 13.5m x 6.7m



Jay 4 bed floor plans available upon request*

Raven 2 Bed Lodge Range

*Available from May 2024**

2/3 bed size: 40 x 20 ft / 12.2m x 6.3m

2/3 bed XL size: 44 x 22 ft version (13.5m x 6.7m)

CENTRE LOUNGE LODGE DESIGN



SINGLE & TWIN UNIT MODEL



Raven Lodge

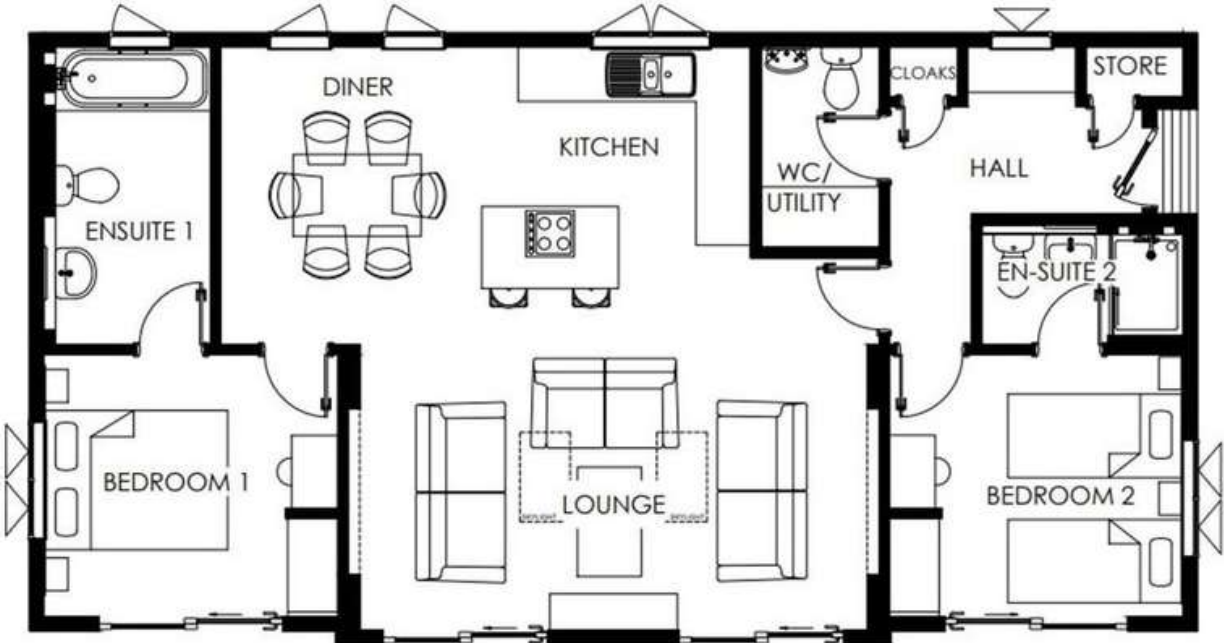
Raven 2 bedroom

Single Unit Lodge - 40ft x 13ft - 12.2m x 4m



Raven 2 bedroom lodge

Twin Unit Lodge - 40 x 20 ft / 12m x 6.3m



Starling 2 Bed Lodge Range

*Available from May 2024**

2/3 bed size: 40 x 20 ft / 12.2m x 6.3m

2/3 bed XL size: 44 x 22 ft version (13.5m x 6.7m)

OFF-CENTRE TWIN UNIT MODEL



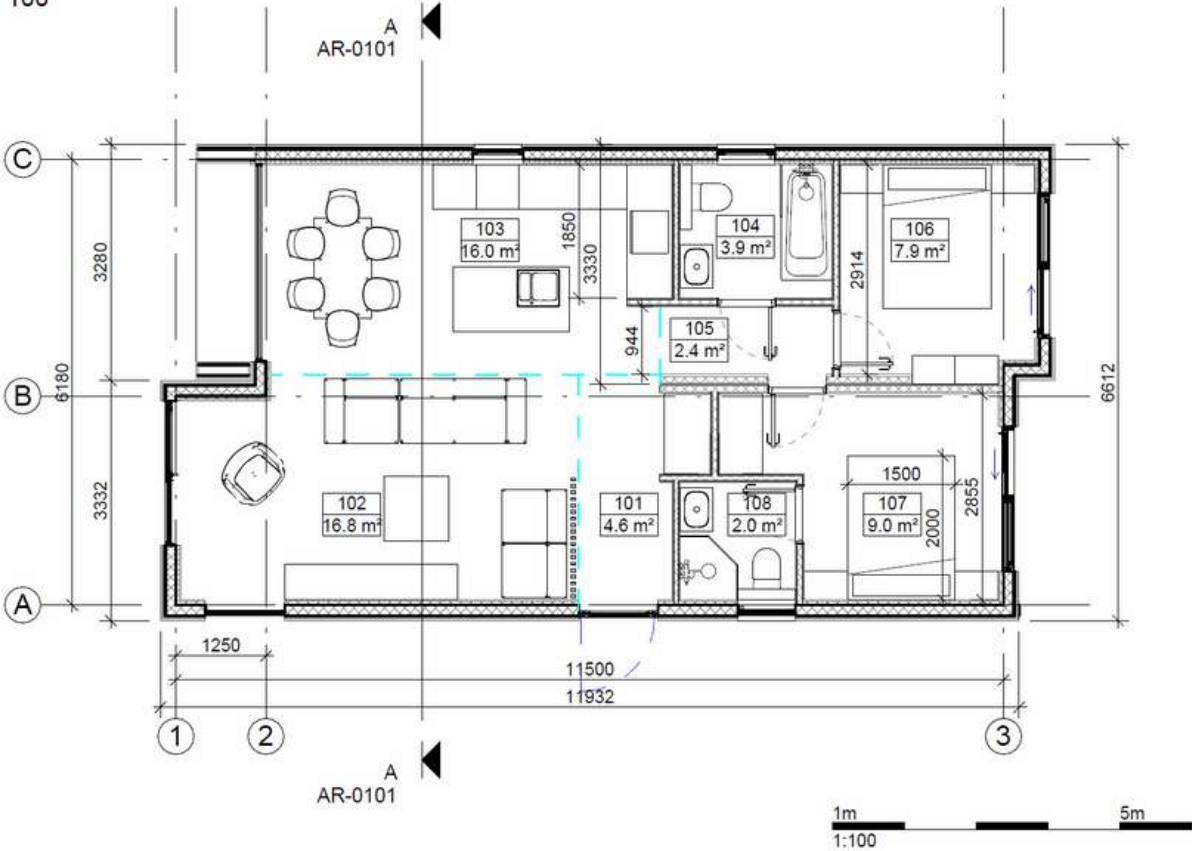
VARIATIONS ON DARK BLACK CLADDING & LIGHT-TONED TIMBER CLADDING



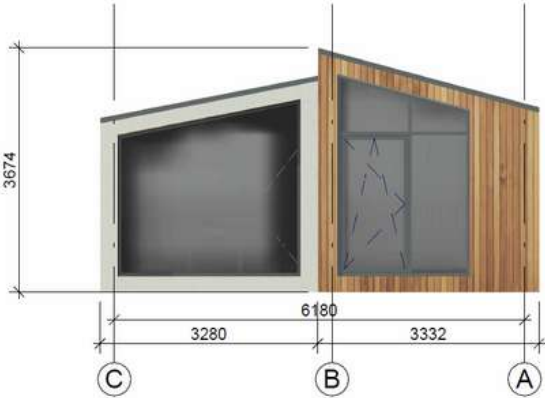
Starling Lodge Range

Twin Unit Lodge - 40 x 22 ft / 12m x 6.6m (other sizes available from 40 x 20ft to 44 x 22ft
 Can be made into a 3-bedroom design upon request*

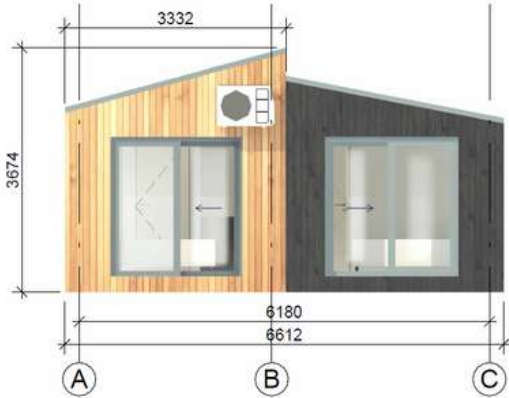
FLOOR PLAN
 M 1 : 100



ELEVATION C-A
 M 1 : 100



ELEVATION A-C
 M 1 : 100



Introducing The Eden 2 Bed Lodge

2 bed - 39 x 12 ft / 12m x 3.7m

EXTERIOR (RENDER IN DARK CLADDING & GREY WOOD PAINT)



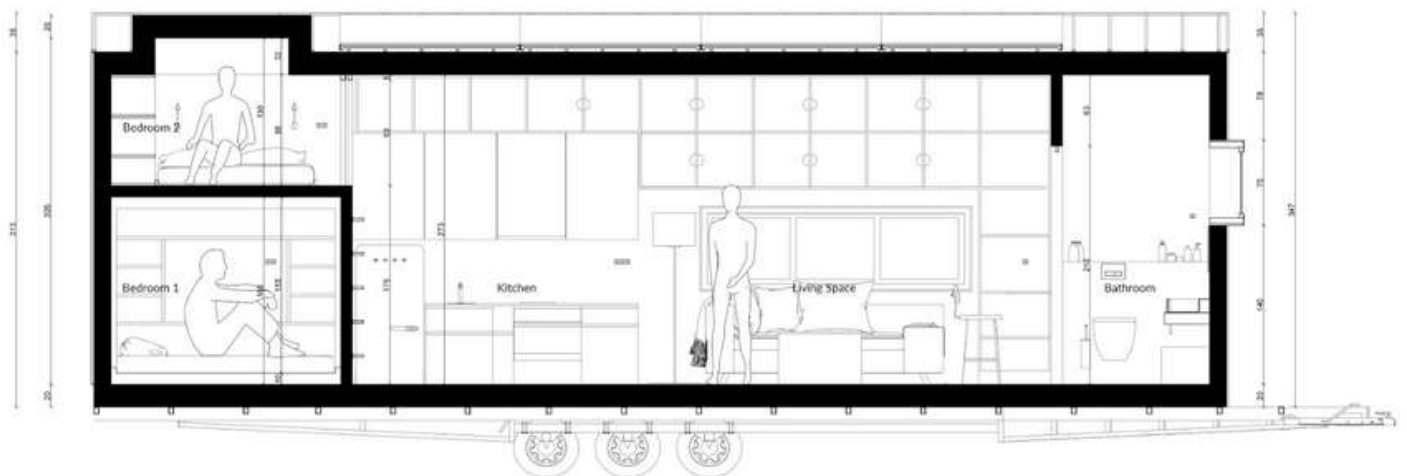
Unique Design

Experience the Eden Lodge: a unique blend of upscale and loft-style living. The bright, genuine wood interior shines brilliantly against expansive windows, while the fully equipped kitchen boasts a luxurious oak worktop.

Designed like an adult bunk bed, both the ground and loft bedrooms offer panoramic views, ideal for stargazing and morning vistas. The sleek bathroom combines style and utility, featuring a spacious shower and chic vanity.



The lodge's exterior, with its robust anthracite and warm thermowood, promises a standout presence in any setting.



Solar PV Package

REDUCE YOUR DEPENDENCE ON THE GRID



Our Solar PV package is an essential investment for any lodge owner looking to cut energy costs, enhance sustainability, and appeal to the eco-conscious traveller.

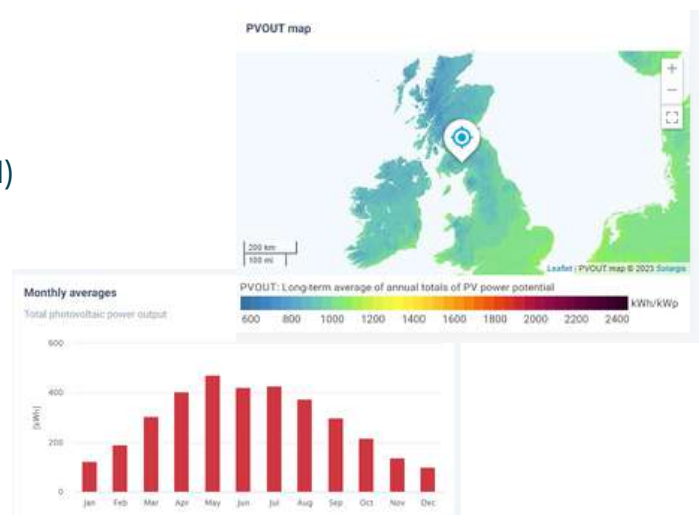
By integrating solar panels, lodge owners can slash their energy bills by up to 80%, significantly reducing their dependence on the traditional power grid, saving £1000s per year on energy bills compared to a typical home or lodge annual energy bill.

This is especially beneficial for expansive sites, where extending electrical infrastructure can be costly and disruptive. Moreover, solar power is a step towards a smaller carbon footprint, aligning with the growing demand for environmentally responsible travel options.

Not only does this package position lodge owners as pioneers in green hospitality, but it also provides the potential to command higher rental prices, as guests are increasingly willing to pay a premium for accommodations that support their sustainable lifestyle choices.

What's Included in the Solar PV Package

- 8-12 panels (depending on the chosen model)
- 1 x inverter (5kw - 8kw)
- 2 x solar PV batteries (5kwh)
- Isolator switches
- Full installation
- Remote assistance
- Solar Report (Estimated Annual Output)



From Vision to Reality

We are more than just a lodge manufacturer; we are a partner in realising your aspirations. With a deep-seated respect for the individual needs of our valued clients, here's a glimpse into our meticulous process:

Tailored Consultations: Before we consider booking your build, our team are immersed in the details of your site and location. We dive deep, understanding every facet of your vision, and ensuring the final product is nothing short of your dream.

Sustainable Reporting: We back up our sustainable practises with annual estimated reports of each purchased model, so you can see how much water, electricity and cO2 you may have saved over the year!

Site Visits and More: To ensure that we are the right builder for you, we would complete an on-site visit, ensuring flawless site access, precision in solar calculations, and optimal positioning recommendations for fresh setups.

Craftsmanship Timeframe: Our expert team of craftsmen will create your stunning lodge in no time at all, with rigorous checks to match. It leads on to our experienced delivery & siting team, which will ensure the lodge is carefully levelled and ready to go.

Solar Enhancements: Opting for our solar package? Our expert team will have it seamlessly integrated on the factory floor, ensuring everything works from the get-go.

Maintenance and Assurance: We don't just build and leave. A comprehensive maintenance check awaits at the 3-month mark, ensuring your lodge remains the epitome of perfection.

Looking Ahead: We highly recommend securing your dream lodge for 2024 with a deposit of just £4,995. Get in touch today!

PRICING

All of our models are built above BS3632:2023 standards.

Thinking of using ground pads, ground screws or a different form of foundation without a trailer? Get in touch to discuss.

If you don't need solar panels or aren't interested in the Eco Deluxe offering, then we will offer our premium package price*

MODEL	PREMIUM	ECO DELUXE
Skylark Slimline 1 bed	£78,500	£87,500
Skylark 1 bed	£83,500	£93,500
Skylark 1 bed XL	£95,500	£105,950
Skylark 2 bed XL	£96,500	£106,950
Grouse 1 bed	£90,500	£100,500
Grouse 2 bed	£91,500	£101,500
Eden 2 bed	£98,500	£108,500
Jay 2 bed (40 x 20ft)	£144,950	£155,950
Jay 3 bed (40 x 20ft)	£146,950	£157,950
Jay 2 bed (44 x 22ft)	£149,500	£160,500
Jay 3 bed (44 x 22ft)	£152,250	£163,750
Jay 4 bed (44 x 22ft)	£154,950	£166,450
Raven 2 bed (40 x 13ft)	£97,500	£107,950
Raven 2 bed (40 x 20ft)	£146,950	£159,950
Starling 2 bed (40 x 20ft)	£147,950	£160,950
Starling 2 bed (40 x 22ft)	£150,950	£163,950

What's included in the packages is on the next page*

ALL PRICING IS EX WORKS*



VAT prices are approx with the exact figure being calculated at the time of invoice. Prices are for all homes dispatched from March 2024. The Tiny Housing Co Ltd (THC) reserve the right to alter prices at any time up to eight weeks before production commences for orders placed on longer delivery times. This is subject to any rise in manufacturing costs or legislation change. All prices quoted are ex-factory. Transport, siting and site development contributions will be quoted by us at a later date. This price list forms no part of any contract. E&OE. Prices are correct at the time of going to press March 2024. Images are artistic impressions – actual exterior and interior lodge design may vary

What's Included	PREMIUM	ECO DELUXE
Highly-insulated Airtight structure	✓	✓
Triple-glazed windows and doors	✓	✓
Low Wattage LED Lighting	✓	✓
Highly Durable Laminate Flooring	✓	✓
Internal Huntonit wallboards or Fermacell boards	✓	✓
Internal wall finishing custom options	✗	✓
External Rough Sawn Spruce cladding	✓	✓
Thermowood cladding/Sugi Ban cladding	✗	✓
Premium fully-fitted kitchen w/appliances	✓	✓
Premium fully-fitted bathroom & water saving devices	✓	✓
Luxury bathroom/kitchen finishing options	✗	✓
Premium furnishings (wardrobe, shelves)	✓	✓
Bespoke furnishings/storage solutions	✗	✓
Soft furnishings & blinds	✓	✓
Bespoke colour options	✓	✓
Ventilation in Kitchen + Bathroom	✓	✓
MVHR System (Heat Recovery)	✓	✓
Sunamp water heater (Energy Saving)	✓	✓
Air Source Heat Pump (heating/cooling)	✓	✓
Complete Solar PV (tailored to each model)	✗	✓
Shower Heat Recovery System (saves 50% energy on showers)	✗	✓

Benefits of the standard package

The premium package offers a full turn key home for immediate use. Its design, with minimal customisation options, suits those who prefer selecting from our premium range which has taken the hassle out of long lists of options, simplifying the process. You get all of our 'green-tech', knowing that we've selected the very best finishes, materials and appliances that will last decades - future proofing your home.

Benefits of the Eco-Deluxe package

This eco-deluxe package includes all the cutting-edge green technology along plus a range of opulent fixtures and finishes to personalise your home, reflecting your unique identity, and you'll be able to save £1000s on your energy bills per year with specially designed solar PV system and battery storage. We've also taken care of the heating & cooling of your home, as we use state-of-the-art air source heat pumps and MVHR systems, which all combine to create a future-proofed lodge, built to last.

Remove the need for costly & inconvenient modifications, maintenance and retrofits with our eco-deluxe package.





What's Included in the Eco Deluxe Package

Bespoke Chassis + Built to exceed BS3632:2023	✓
Highly insulated airtight structure	✓
Triple-glazed windows and doors	✓
Low-wattage LED Lighting	✓
Highly durable laminate & LVL Flooring	✓
Internal Timber Cladding or Fermacell	✓
Optional internal wall finishes	✓
External rough-sawn spruce cladding	✓
Optional Thermowood cladding or Sugi Ban	✓
Luxury fully-fitted kitchen + appliances	✓
Luxury fully-fitted bathroom	✓
Bespoke furnishings/storage solutions	✓
Mattresses, bedding & blinds / curtains	✓
Bespoke colour options	✓
High-Spec ventilation (Kitchen + Bathroom)	✓
MVHR (Heat Recovery)	✓
Sunamp water heater (Energy Saving)	✓
Air Source Heat Pump (heating/cooling)	✓
Complete Solar PV (tailored to each model)	✓

Warranties & After Sales Service

2-year workmanship warranty and 10-year structural warranty.

A dedicated aftercare team and remedial workers on hand.

Annual check-up of home to inspect for the first year, for added peace of mind.

Unique offering: Annual report detailing potential water, energy savings, and CO2 reduction for marketing purposes.

Delivery and Siting

We work with a trusted third-party haulage partner to deliver and expertly position your home.

After delivery, our in-house team of installers performs a final check and inspection so you can rest easy knowing everything is taken care of.

With our team offering expert support & advice, site surveys and a dedicated transport plan, you'll know you're in good hands before and after delivery.



Our Care for You & the Planet

We take steps to reduce our impact on the world, planting trees and covering the carbon emissions that our homes emit when we build them.

Furthermore, we select the best materials for your health - longevity - and enjoyment.





SPECIFICATION COMPARISON


Method & Materials	Traditional Lodge Specification	THC Specification	THC Benefits
Insulation	<ul style="list-style-type: none"> • Wall U-value = 0.30-0.35 • Roof U-value = 0.17-0.20 • Floor U-value = 0.26-0.35 <p>Airtightness = not usually tested</p>	<ul style="list-style-type: none"> • Wall U-value = 0.13 • Roof U-value = 0.12 • Floor U-value = 0.12 <p>Airtightness = 0.76 m3 @ q50 UK standard = 10 m3 @ q50</p>	<p>Heat retains for longer Lower energy & heating bills Improved sound absorption</p>
Cladding	<p>Composite Cladding 20-25 year lifespan.</p> <p>Timber cladding or other materials.</p>	<p>Thermowood or Charred Cladding 30-60 year lifespan.</p> <p>Metal Standing Seam 50 year lifespan.</p>	<p>Designed to last a lifetime Minimal maintenance No chemicals or plastics used</p>
Membrane	<p>Basic housewrap, with minimal insulative value or low air-tightness ability.</p>	<p>SIGA Majcoat 150 Membrane with Siga Wigluv tape.</p> <p>(used in all Passive Haus homes)</p>	<p>Eliminates draughts Airtight & Insulative Heat retains for longer</p>
Framing	<p>Timber frame or SIPs 100-150mm Wall 150-200mm Floor 150-200mm Roof</p>	<p>C24 Structural Timber frame</p> <ul style="list-style-type: none"> • 200mm Wall • 250mm Floor • 250mm Roof 	<p>Stronger, more resilient with less defects. Thicker walls for additional insulation</p>
VCL	<p>Tyvek or other membrane with basic tape for minimal airtightness control</p>	<p>SIGA Majpell® 5 Vapour Control Layer with Siga Rissan Tape 0.76 m3 (q50 test)</p>	<p>Used in Passivhaus homes Airtight & Insulative Impermeable to water Prevents condensation.</p>
Windows & Doors	<p>Windows - Double Glazing 1.2-1.6W/mK</p> <p>Doors - Double Glazing 1.2-1.6W/mK</p>	<p>Windows - Triple Glazing 0.8W/mK (U-Value)</p> <p>Doors - Triple Glazing 0.8W/mK (U-Value)</p>	<p>Reduce heatloss up to 40% Better sound absorption for quiet holiday experiences</p>
Mechanical & Heating	<p>Air vents and membranes</p> <p>Gas heating or wood burner.</p>	<p>MVHR - Superior airflow & recuperation</p> <p>Air source heat pump - cooling & heating ability</p>	<p>Provides cleaner air and reduces condensation. Reduces heating bills by up to 70%</p>



MATERIAL COMPARISON

Method & Materials	Traditional Lodge Manufacturers	THC Lodges Specification	THC Benefits
Exterior Cladding	Composite Cladding (CanExel) 25-30 year lifespan.	Thermowood / Sugi Ban Charred Cladding 30-60 year lifespan. Metal Standing Seam 50 year lifespan.	Real wood, dried and resistant to fungi, mold and deformation. Luxury finish.
Internal Walls	Standard Gypsum Boards Plywood overlaid with decorative PET film layer	Fermacell Boards Baltic Birch Plywood (B/BB grade)	Sourced from local forests. Fermacell is fire-resistant, made from recycled products, excellent sound absorption.
Silicones / Solvents / Paints	Generic Silicones, Solvents and 'Trade Paints'	Mapesil, Tikkarula Luja7	Products that are non -toxic for healthier indoor air quality.
Water Saving	No additional water saving features	Aerated Showerheads & Taps	40% reduction in water usage
Indoor Air Quality	Standard 'envirovent' or equivalent for kitchen & bathroom No MVHR No air filtration system typically	Air Source Heat Pump (with HEPA Filter) MVHR System (Reduction in mold and condensation) Clean products combined reduce VOCs by up to 75%	HEPA filters remove at least 99.97% of dust, pollen, mold, bacteria, and any airborne particles with a size of 0.3 microns (µm).
Underlay	Generic Underlay	Steico Eco Silent Underlay	Excellent impact and sound resistant. Made from natural wood fibres & recyclable.

THC ECO-FRIENDLY MATERIALS & CERTIFICATIONS

<p>Laminate Flooring</p>	  
<p>Bathroom Wall Panels</p>	 
<p>Woodfibre Underlay</p>	   
<p>PVC Roofing Membrane</p>	 
<p>Vapour Barriers, Tapes & Membranes</p>	  
<p>Ultra-low VOC, allergy friendly paints</p>	  
<p>Solar PV, Thermal & Water Heating</p>	  

Get ready for the future of holiday lodges

www.thetinyhousing.co

sales@thetinyhousing.co

